

**The following blueprints are courtesy
Ralph Hagan, author of "The Liberator Pistol",
and are presented with his permission at
www.biggerhammer.net.**

**For more Liberator info, you can purchase his book at
<http://home.pacbell.net/rlhag65/>**

THE LIBERATOR PISTOL



**DEVELOPMENT
PRODUCTION
DISTRIBUTION**

RALPH HAGAN

REPRODUCTION OF THE U.S. S&W GRAND C.A. DEX GUN

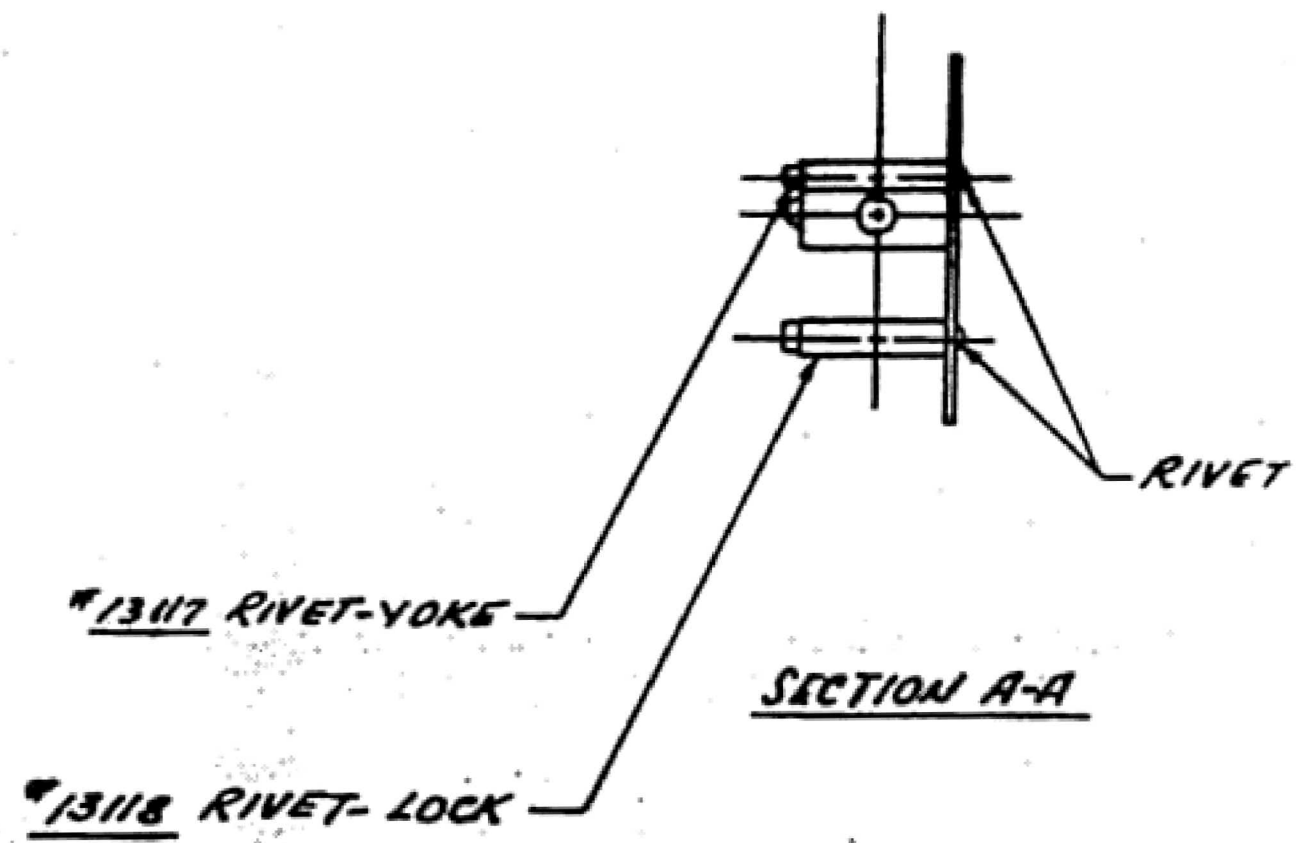
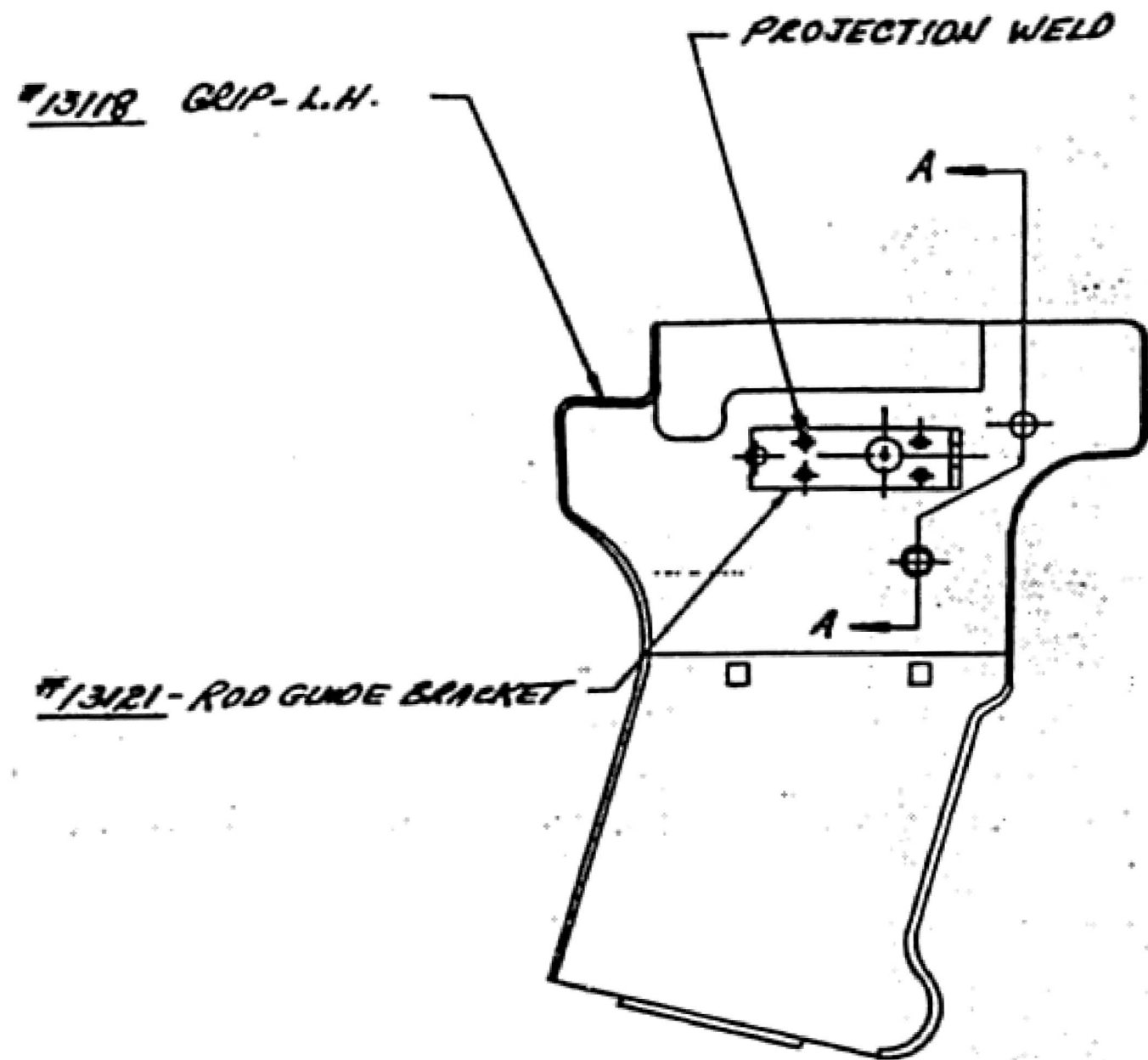
Contents Copyright Ralph Hagan 1996

Part Nomenclature	"Cover Name"	Drawing Number
1. Handgrip	Grip, Left-hand	13108
2. Right Handgrip	Grip, Right-hand	13108-13109
3. Breechblock	Cover, Slide	13127
4. Breechblock Spring	Lock Spring	13119
5. Breechblock Spring Pin	Rivet Lock	13118
6. Barrel Strap	Tube Strap	13125
7. Barrel	Tube	13110
8. Trigger Guard	Spanner	13126
9. Cocking Knob	Control Handle	13124
10. Breechblock Guide Pin	Guide Pin	13124-1
11. Firing Pin	Control Rod-Upper Part	13124
12. Cocking Knob Guide Rod	Control Rod-Lower Part	13120-13124
13. Guide Rod Support	Rod Guide Bracket	13121
14. Guide Rod Spring	Control Rod Spring	13132
15. Guide Rod Collar	Collar	13122
16. Guide Rod Collar Pin	Collar Pin	13123
17. Trigger	Yoke	13113-13131
18. Trigger Spring	Yoke Spring	13115
19. Trigger Connector	Yoke Lever	13114
20. Trigger Connector Pin	Shoulder Rivet	13116
21. Trigger Hinge Pin	Rivet-Yoke	13117
22. Trigger Spacers, 2 each	Spacer	EX-1174-1
23. Magazine Plate	Snap Cover	13112

Also shown are assembly drawing numbers: 13111, 13128, 13129, 13130, 13131 & 13154.
Drawing 13133 is a list of the drawings.

INLAND MANUFACTURING DIVISION

GENERAL MOTORS CORPORATION
DAYTON, OHIO



VARIES ALLOWED PLUS OR MINUS .010 ON FRACTIONAL AND PLUS OR MINUS .005 ON DECIMAL DIMENSIONS UNLESS OTHERWISE SPECIFIED

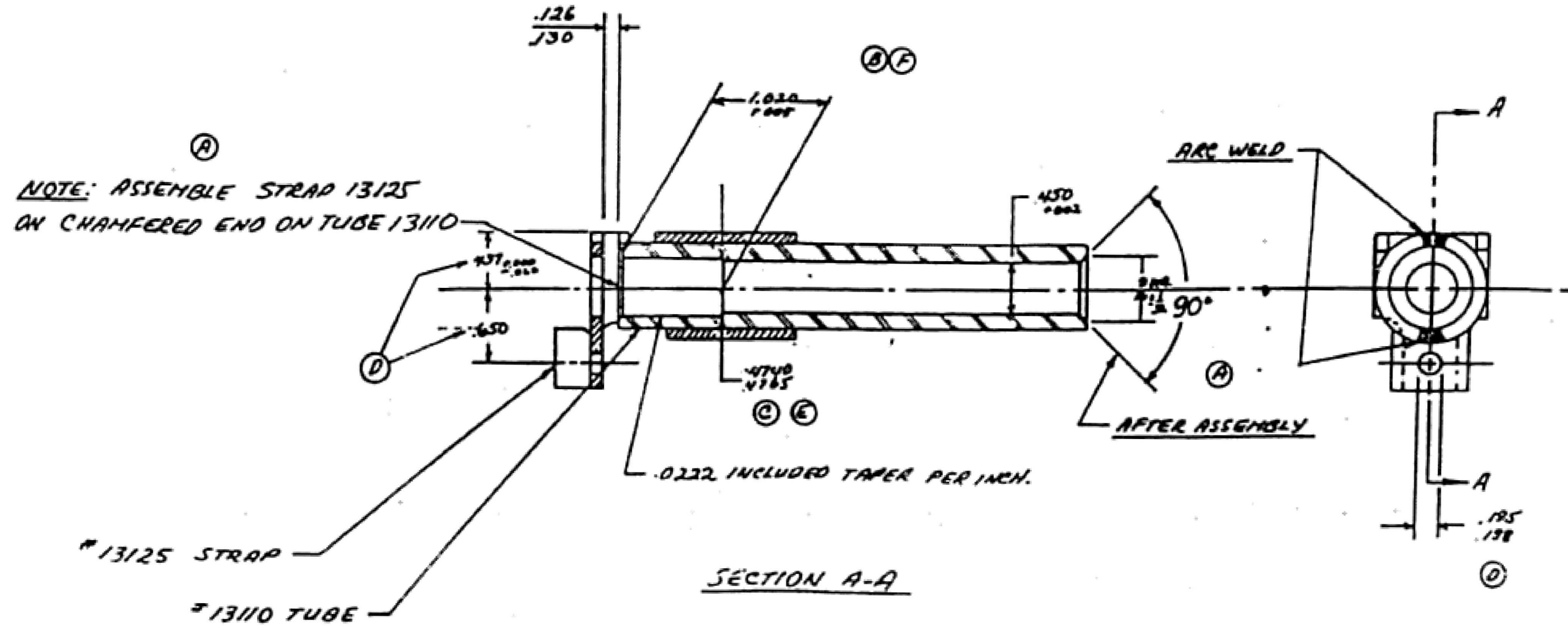
DO NOT SCALE

REV.	CHANGES	DATE	C'R	REF. NO.	REV.	CHANGES	DATE	C'R	REF. NO.

MAT'L	C.R.S.	SPEC.	REL. NO.	DATE
FINISH		SPEC.	SCALE	
DRAWN BY	DATE STARTED	FINISHED	CHECKED	DATE
	5-15-42			5-15-42
NAME	GRIP L.H. ASSEMBLY			DRAWING & PART NO.
				13108

INLAND MANUFACTURING DIVISION

GENERAL MOTORS CORPORATION
DAYTON, OHIO



LET	CHANGES	DATE	ENR	REF. NO.	LET	CHANGES	DATE	ENR	REF. NO.
					E	.0775 WAS .0786			
					D	O.M. ADDED	2-9-42		
					C	.0740/.0785 WAS .0720/.0785	6-25-42		
					B	.006 W/AC .004	6-25-42		
					A	NOTES ADDED	5-16-42		
					F	WAS .025 + .004	2-15-42		

MAXIMUM ALLOWED PLUS OR MINUS .010 ON FRACTIONAL AND PLUS OR MINUS .002 ON DECIMAL DIMENSIONS UNLESS OTHERWISE SPECIFIED

DO NOT SCALE

MATL	C. R. S.	SPEC.	REL. NO.	DATE
FINISH		SPEC.	SCALE	
DRAWN BY	DATE ESTIMATED	FINISHED	CHECKED	DATE
HAMISCH	5-13-42			5-15-42
NAME	DRAWING & PART NO.			
TUBE & STRAP ASSEMBLY	13111			

